

Aluminium Rolling Door MOD. 25EI-ALD



PRODUCT DESCRIPTION-

Roll-up door, double-walled lacquered aluminum with internal insulation and end pieces of robust plastic. Resistant to wear and tear and corrosion. Galvanized guides, resistant to wind loads conforming to DIN 1055 T4, with wear resistant plastic guiding joints. Closing TOP seal and steel tube retractor shaft with primer according to DIN 2458 with welded shafts on both sides for the housing of the drives, the retention devices and the bearing.

Drive: Direct drive to the axle with integrated parachute system, independent of position and speed. Pendulum-shaped housing. Rolled worm shaft, thermal protection in the motor winding. Emergency system with ground-reducing chain and type of protection IP 54, with TÜV certificate. Maintenance free.

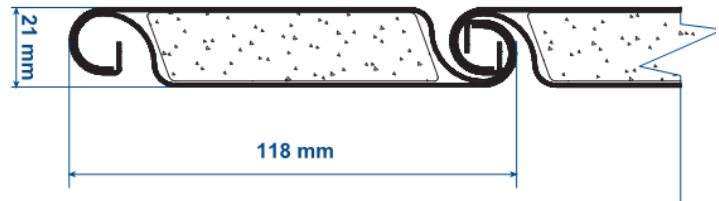
Control: CS 300 with special development for roller and sectional doors, optimally adapted to the requirements required in this sector, with fully developed microprocessor, 4 programmable relay outputs with 28 functions, integrated adjustable force limitation, final position adjustment Via absolute value transmitter, status and diagnostic messages, 24 V control voltage, IP 65 protection type.



TECHNICAL SPECIFICATIONS

- MATERIAL	Smooth Aluminium band of 0.98 mm. lacquered on both sides.
- STANDARD COLORS	RAL 9010 ,RAL 9006, RAL 5010, RAL 3000
- SPECIAL COLORS	Consult
- HEIGHT OF PROFILE	114 mm
- WEIGHT OF CURTAIN	10 Kg/M2
- WIND Load EN 12424	- Class 3 upto 7.000 mm Class 2 upto 10.000 mm.
-Water permeability EN 12425	-Clase 1
-Acoustic resisitance EN 717-1	24 dB
-Coefficient of Thermal transmission curtain.	4,5 W(m ² -K)
- Coefficient of Thermal transmission door.	5,3 W(m ² -K)

SLATS



- Double profile of lacquered aluminum of 1mm thickness profiled from an alloy aluminum band 3003 and hardness h 47, linked together (outer face / inner face) in the form of a continuous hinge, with polystyrene core of density 25.

STANDARD LACQUER: Standard treatment of polyester of 19μ and 3^a according to norm EN-1396. With 5 years guarantee. Possibility of other treatments like polyester of very high durability with polyamide

COLORES

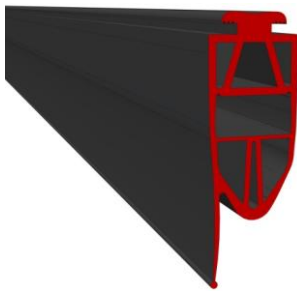


RAL. All colors of the Ral card are supplied with polyester powder coatings with maximum adhesion guarantee and excellent results, with QUALICOAT seal SEASIDE class

TOP AND BOTTOM SEAL

TOP SEAL.

A profile with a brush formed by a metal "U" aluminum + polypropylene brush is installed at the top between the door slab and the head of the wall for a perfect thermal and acoustic insulation, as well as prevent entry Of dirt and insects.



INFERIOR.

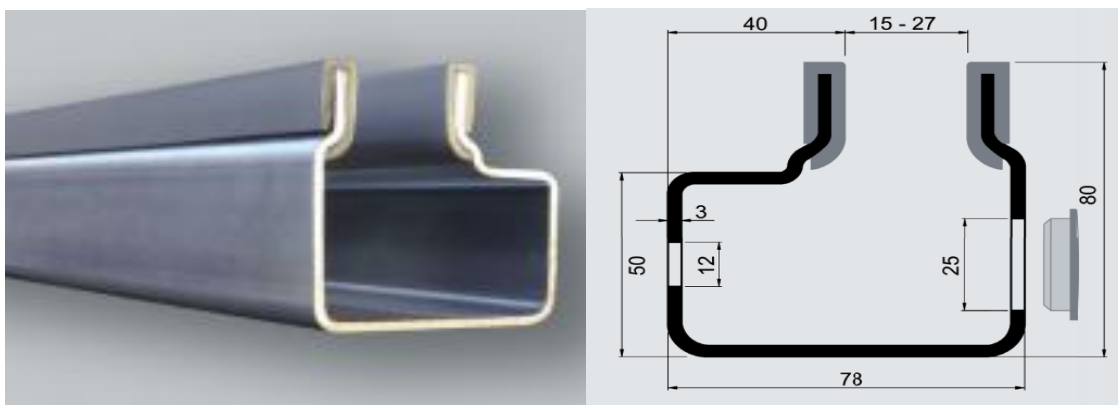
The bottom seal of EPDM rubber profile door 60°Sh.A. Resistant to the push-ups and protected against freezing it achieves a hermetic closing of the door avoiding the entrance of air and water. Designed specifically with, shelter system security door sensor (resistive sensitive band).



GUIDES

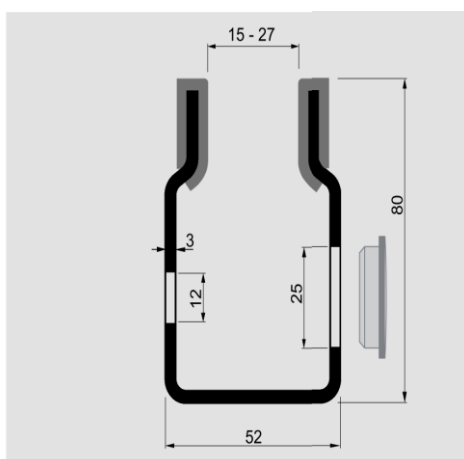
MODEL : RD1369.

The RD1369 guide is designed for all Rolling door applications with optimal performance that can be used with or without wind systems. The PVC sealing strips used reduce wear and improve the smooth movement of the slats. There are sealing strips that can also be with PVC sealing lip or brush, which guarantees a more hermetic closure of the slats.



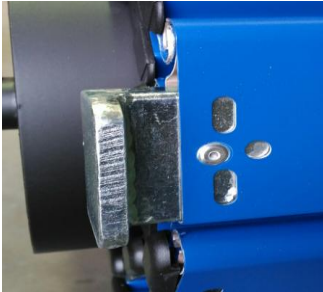
MATERIAL	Galvanized Steel of 3 mm.
WEIGHT	5,8 kg/m
DISTANCE BETWEEN OPENING	600 mm

MODELO: RD1371. The RD1371 guide is designed for all rolling door applications where the wind shield is not required. Used the same sealing strips as model RD1369



MATERIAL	Galvanized Steel of 3 mm.
WEIGHT	4,7 kg/m
DISTANCE BETWEEN OPENING	600 mm

WIND PROOF CLIPS

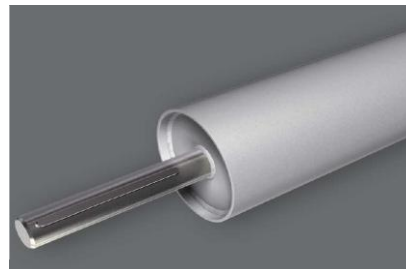


They are installed on the sides of the slats when it is certain that the doors will be subjected to high loads of force by the action of strong winds, or when the width of is superior to 4500 mm. These hooks are installed in combination with the RD1369 - The choice of windscreens with rollers is advisable for doors installed in zones of continuous winds where it is necessary to open the door even under extreme winds. -Dia \varnothing 35 mm



MOTOR SHAFT

The Shaft is constructed of laminated steel and primer-coated, with welded shafts on both sides for the housing of the drives, the retaining devices and the bearings. Diameter of 133,159 or 219 mm, depending on door dimensions.



AXIS. SIDE SUPPORT

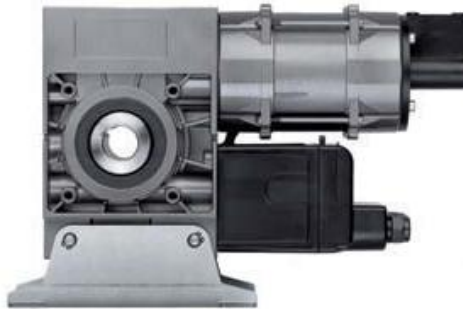
AXIS ANTI- BUCKLING. This is a welded tube, cold-rolled steel 4mm in thickness welded to it calibrated steel tubes in diameter 25.4 mm. This tube is placed in the top of the door between the two guides, and its function is to prevent bending inside / outside (buckling) of Aluminium slats , thereby achieving smooth and accurate glide.

The installation of this system depends solely on the size of the door, when the area of the curtain is very large.

SIDE SUPPORT SYSTEM - fabricated from iron sheet hot rolled coated with white zinc.



DRIVES



MOTOR

Direct-to-axis drive with integrated parachute system and protection by electric separation, rotation voltage 230/400 V, 50 Hz, and 60% efficiency, Electrical protection IP54, thermal protection in the motor winding and emergency device with chain to drive from the ground. - End position adjustment via absolute value encoder (Encoder) Kostal, tested for 5 million cycles of movement -Certificate TÜV. -Free maintenance -All plug connections. -Range of temperature, (-20 + 60) ° C - Sound Pressure Level ----- <70dB.

CONTROL- CS 300

Fully developed microprocessor control.

- Protected housing for printed circuit board.
- Cable entries and plug-in terminal connections.
- 24vdc power supply for external accessories. Max. 250 mA.
- Short circuit-proof low voltage
- Transformer switchable from 230V / 3 ~ to 400V / 3 ~
- Plug-in points for AF-receiving module and weekly programmer clock
- Pressure waveform strip, electrical contact strip, connectable optical sensor
- Illuminated keypad with lid
- Base shell base with integrated cover hinges
- Adjustable pre-mounted wall bracket
- Cable duct for connecting conductors.
 - Type of protection, IP 65
 - Direction of rotation detection
- Programmable intermediate position
- Integrated adjustable force limitation.
- Automatic floor adaptation



R&D DOORS, S.L.

CIF: B71109284
Polígono industrial Mórea sur nº 30
31191- Beriain. (NAVARRA)
ESPAÑA
export@rddoors.com